

From the desk of Amy Ho

For Rent: Premier Office Space at Menara Tun Ismail Mohamed Ali, Kuala Lumpur

Asking Rental : MYR 109,148/month or MYR 4.50 per sq. ft.

Level : 26th Floor

Size : 24,255 ft²

This top-floor unit in Menara Tun Ismail Mohamed Ali, located on Jalan Raja Laut, offers a breathtaking 180-degree view of the Kuala Lumpur city center. Featuring high ceilings that create an atmosphere of luxury and spaciousness, this unit is ideally suited for a corporate office or could be transformed into an exquisite banquet hall or high-end restaurant. Its prestigious location and stunning panoramic views provide a perfect backdrop for businesses aiming to impress.

Menara Tun Ismail Mohamed Ali is a distinguished 27-story office tower ideal for businesses seeking a prestigious address. This tower offers 293,374 sq. ft. of net lettable area and is supported by 467 basement parking spaces, ensuring ample parking for tenants and visitors alike. With its high ceilings and floor-to-ceiling windows, the design exudes a corporate elegance that enhances any business presence. The building is equipped with state-of-the-art security and continuous surveillance, providing a safe and secure environment for all its occupants.

Building Amenities:

Café & Convenience Store Within surrounding vicinity and on-site convenience store

Air-conditioning Ample space for split air conditioning units

Lifts 5 (Low Zone) & 5 (High Zone)

Security Secured facility

F&B Popular and established eateries serving surrounding area (Medan MARA, Pertama Kompleks, Maju Junction)

LRT 5-minute walk to Bandaraya and Sultan Ismail LRT Station

Monorail 8-minute walk to Stesen Monorail Medan Tuanku Station

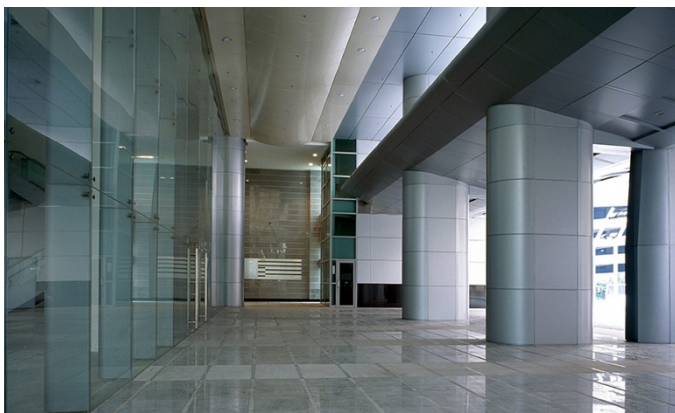
Contact Amy Ho @ +6012-332 1188 to schedule a viewing appointment today!



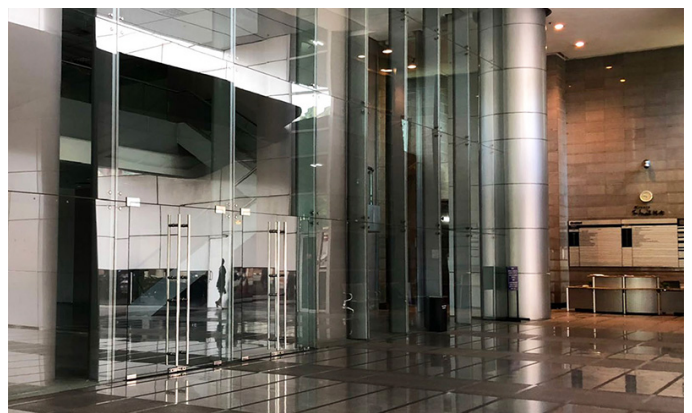
From the desk of Amy Ho

AVAILABILITY

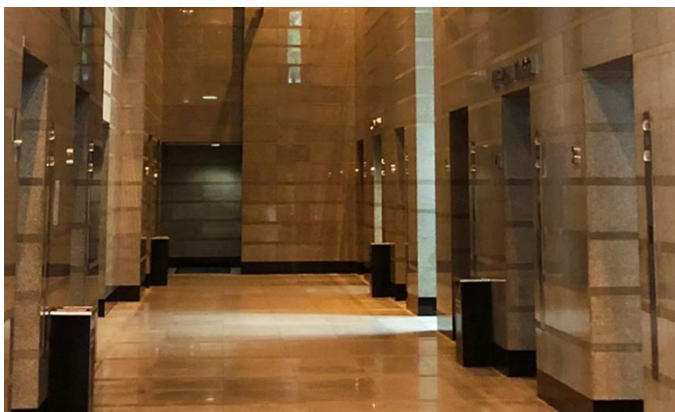
Available Level	Size ft ²	Total Size ft ²	Type	Rental Rate	Rental/Month	Remarks
Level 21	14,437	25,312	Bare Duplex unit	MYR 4.50	MYR 113,904	For Office/Fine Dining/Leisure
Level 22	10,875					
Level 23	15,331	28,881	Bare Duplex unit	MYR 4.50	MYR 129,965	For Office/Fine Dining/Leisure
Level 24	13,550					
Level 25	13,964	24,255	Bare Duplex unit	MYR 4.50	MYR 109,148	For Office/Fine Dining/Leisure
Level 26	10,291					
		78,448				



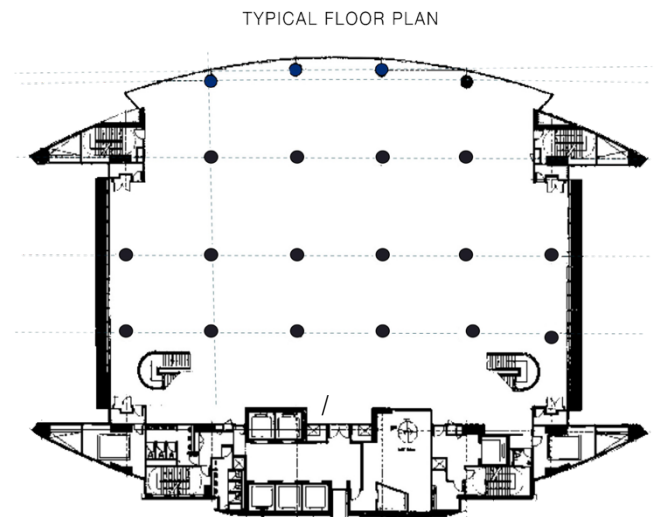
Drop-off Area



Main Lobby



Lift Lobby



Typical Floor Plan

From the desk of Amy Ho

26th Floor Office Space



From the desk of Amy Ho



From the desk of Amy Ho



MENARA TUN ISMAIL MOHAMED ALI