

from the desk of Amy Ho

F&B Space @ **WISMA UOA II**

Location : Jalan Pinang, 50450 Kuala Lumpur
Rental : MYR 2,107./month
Available Sizes : 301 sq. ft.

Situated on the 1st floor, this unit is adjacent to the Link Bridge, offering high foot traffic.

Wisma UOA II is a notable 34-story building offering office suites and three levels of retail space, located next to UOA Centre. The property is directly connected to Suria KLCC, KL Convention Centre, Pavilion Shopping Mall, and key public transit points like LRT & Monorail stations via a Link Bridge, ensuring exceptional accessibility and convenience.

Contact Amy Ho at +6012-332 1188 to schedule a viewing appointment today!

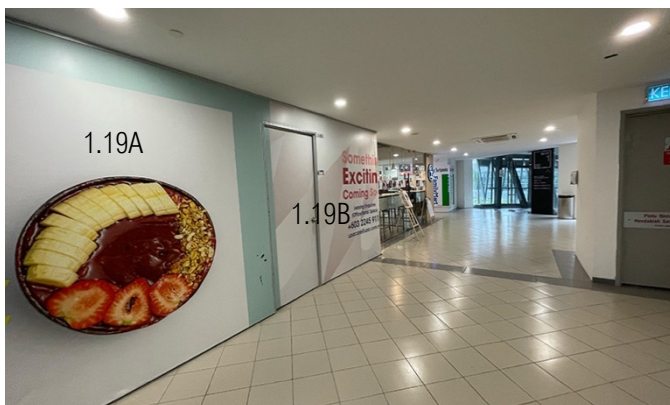
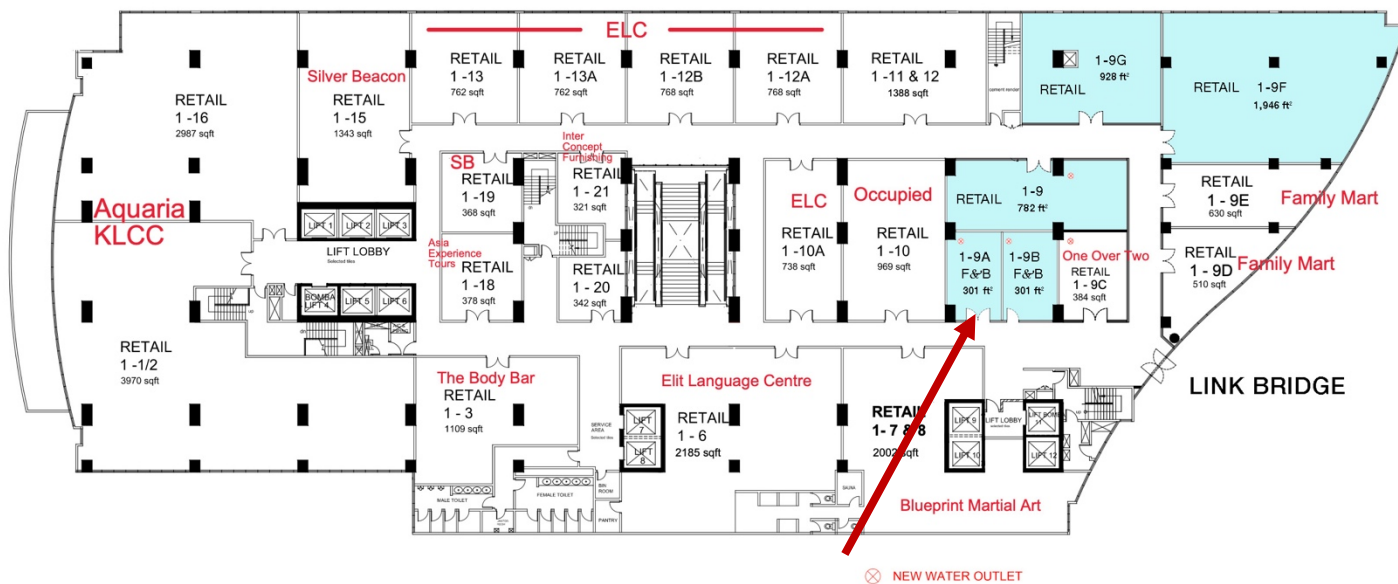


from the desk of Amy Ho

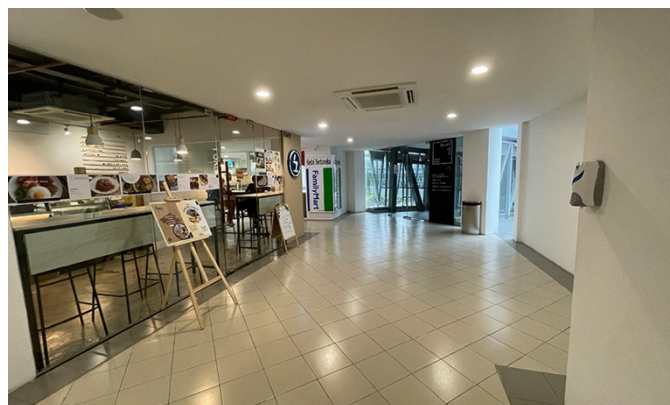
1st FLOOR F&B AND RETAIL SPACE | LINK BRIDGE

Unit 1.9A | Size: 301 ft² | Rental @ MYR 2,107/month

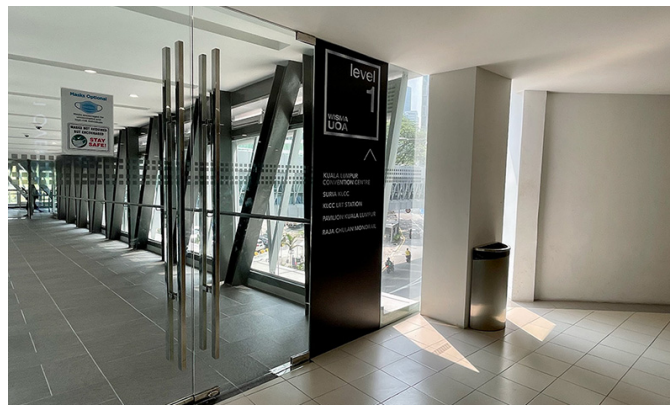
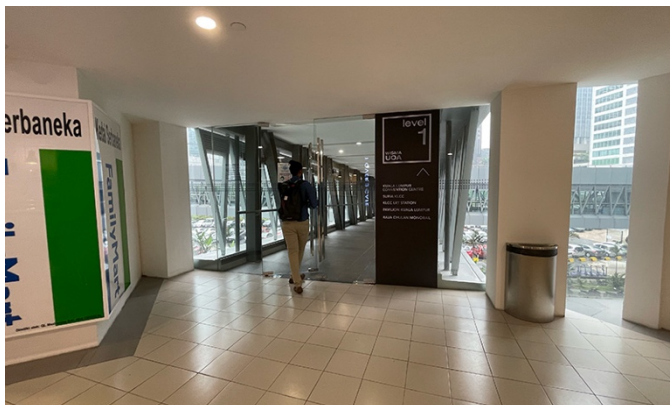
Unit 1.9B | Size: 301 ft² | Rental @ MYR 2,107/month



UNIT 1.19 A & B



LINK BRIDGE to KLCC, PAVILION KL etc



from the desk of Amy Ho

WISMA UOA II

