

From the desk of Amy Ho

F & B Space @ MENARA HAP SENG, Jalan P Ramlee

Rental : **MYR 22,968**/month | Include Service Charge and Centralized Air-Conditioning
Size : **3,186 ft²**

Located in the heart of KL's Golden Triangle, Menara Hap Seng is a bustling 22-story tower linked to Menara Hap Seng 2 & 3. It forms part of Plaza Hap Seng, hosting over 5,000 professionals. The complex is set for expansion with Menara Hap Seng 3 linking to the Hyatt Century Hotel and Menara Hap Seng 2 connecting to The Weld, both by 2024.

Features:

- Prestigious neighbors: KLCC Twin Tower, KL Tower
- Close to luxury hotels: Shangri-La, The EQ, Concorde Hotel
- Easy access: MRT & Monorail stations nearby

Space Details:

- 3,186 ft² on busy Level 1
- Direct link from Menara Hap Seng 2 bridge
- Ideal for Thai, Vietnamese, Steamboat, or Hot Pot restaurants

Contact Amy Ho @ +6012-332 1188 to schedule a viewing today!



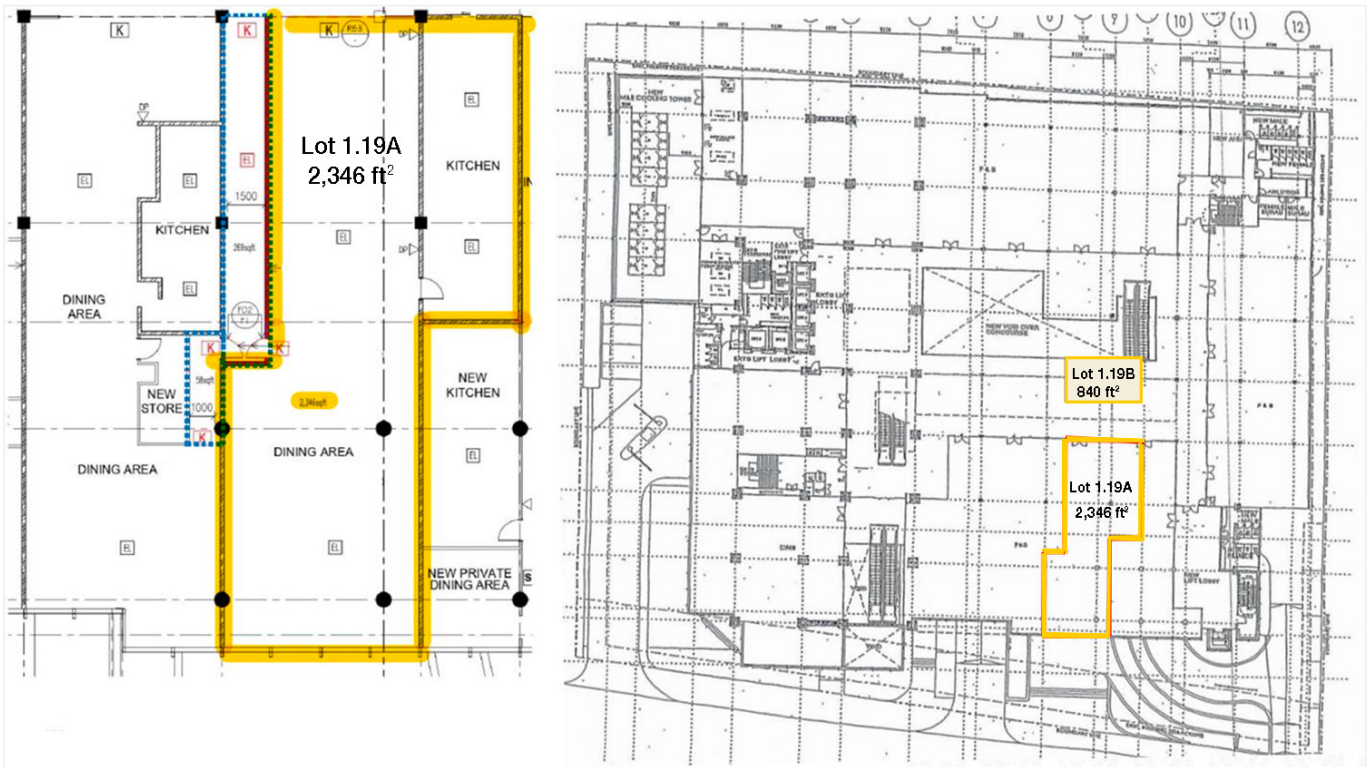
From the desk of Amy Ho

1.19A

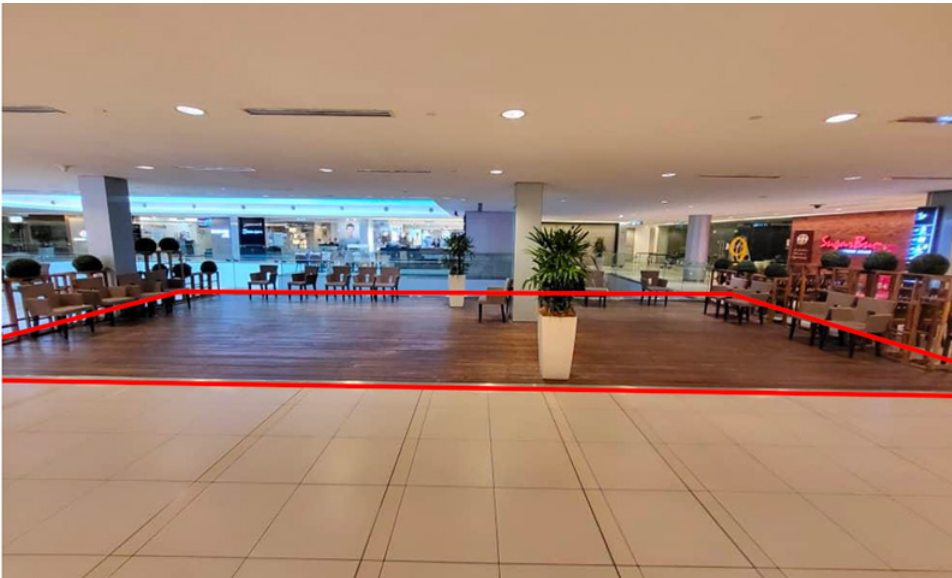
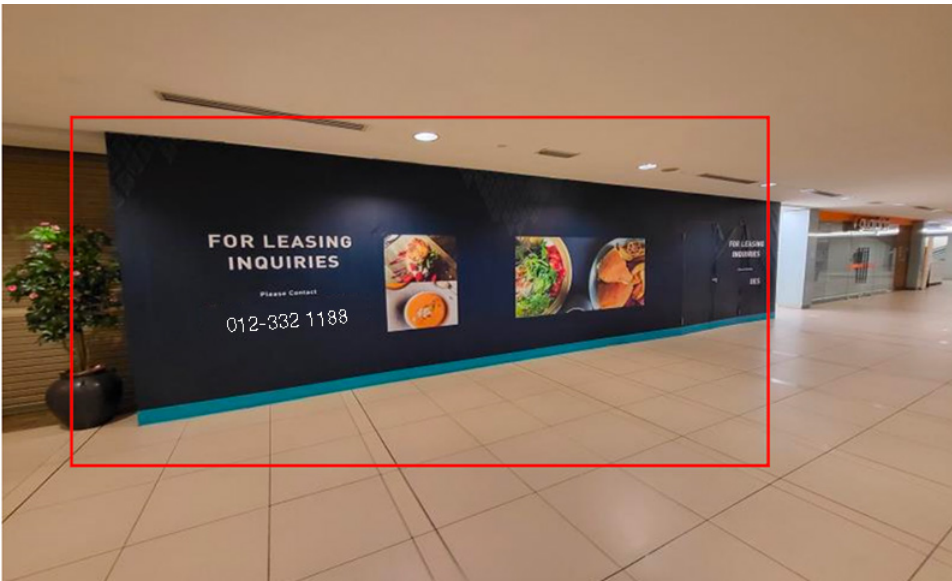
1.19B



FLOOR PLAN



From the desk of Amy Ho



MENARA HAP SENG | RETAIL DIRECTORY

GROUND FLOOR

- LOBBY & RECEPTION
- FAMILY MART
- KOREA PLAZA
- ALI, MUTHU & AH HOCK
- BURGER KING
- BRUSSELS BEER CAFÉ
- MAIL BOXES ETC
- CIGAR LOUNGE
- MAYBANK
- JUICE LAB
- STARBUCKS COFFESS
- LIL UNICORN BY DWI EMAS INTERNATIONAL SCHOOL



1ST FLOOR

- HAN MODERN KOREAN GRILL
- PACIFIC MINI MART
- SIAM BODY WORKS
- HORLOGER GALLERY
- THE DENTIST @ KL
- SVENSON HAIR CENTER
- DC TAILOR
- MEALS STATION
- GUARDIAN PHARMACY
- CAFÉ 9
- SUGARBUN BORNEO ASIAN FOOD
- SWISS CONNECTION WATCHES
- PUNG KYUNG KOREAN RESTAURANT
- AGRAIN
- SOL 28 EXPRESSO BAR
- SHANGHAI SUN



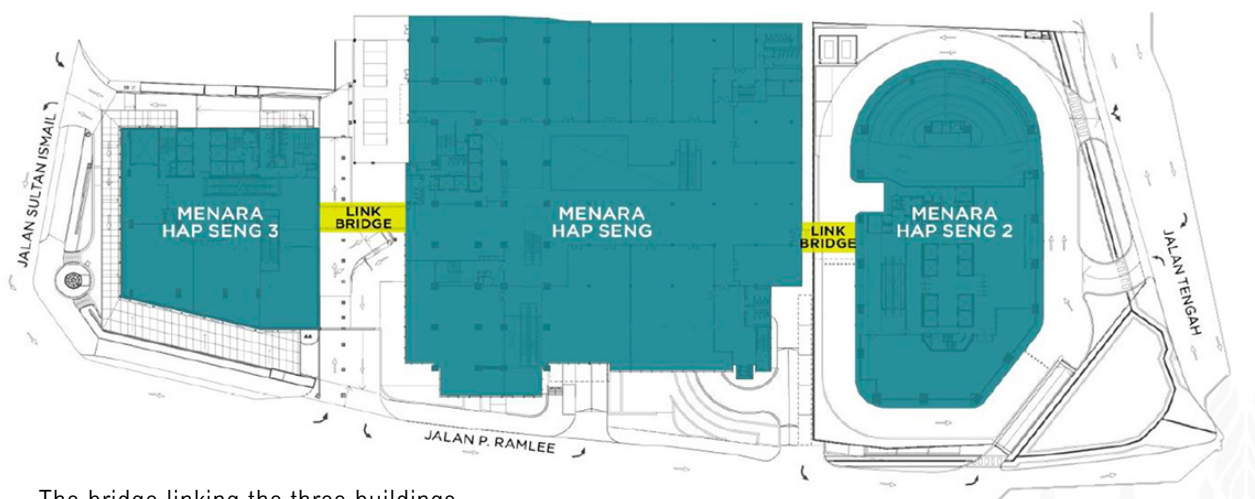
2ND FLOOR

- ELEGANT INN HONG KONG CUISINE
- YOSHIFUKU DINING
- QURESHI INDIAN FINE DINING
- CITY GROCER & DELI



From the desk of Amy Ho

PLAZA HAP SENG



The bridge linking the three buildings.

From the desk of Amy Ho

MENARA HAP SENG

